

Obtaining CLAM "HOW TO"

1.3. CLAM's *sandbox*

Windows does not have a convention (like Linux does) as to where external libraries should be placed. For that reason, the CLAM team has designed its own convention for structuring folders where external libraries should be placed. Using such structure we (and you, of course) can reuse all projects for Visual Studio.

This CLAM convention can be summarized in:

```
/folder sandbox/  
  folder containing CLAM files/  
  folder containing library 1/  
    include/  
    lib/  
  ...  
  folder containing library N/  
    include/  
    lib/
```

That is, folders containing files for an external library are at the same level as CLAM. And, inside these folders, there is (at least) an "include" folder that has all necessary headers and a "lib" folder that has all the pre-compiled binaries related to that particular library.

Before downloading CLAM you should create a local folder (for example `c:/CLAM_Sandbox`) where to put all CLAM files and external libraries.

1.4. Downloading CLAM and associated external libraries

When you start WinCVS you will see a screen more or less like this:

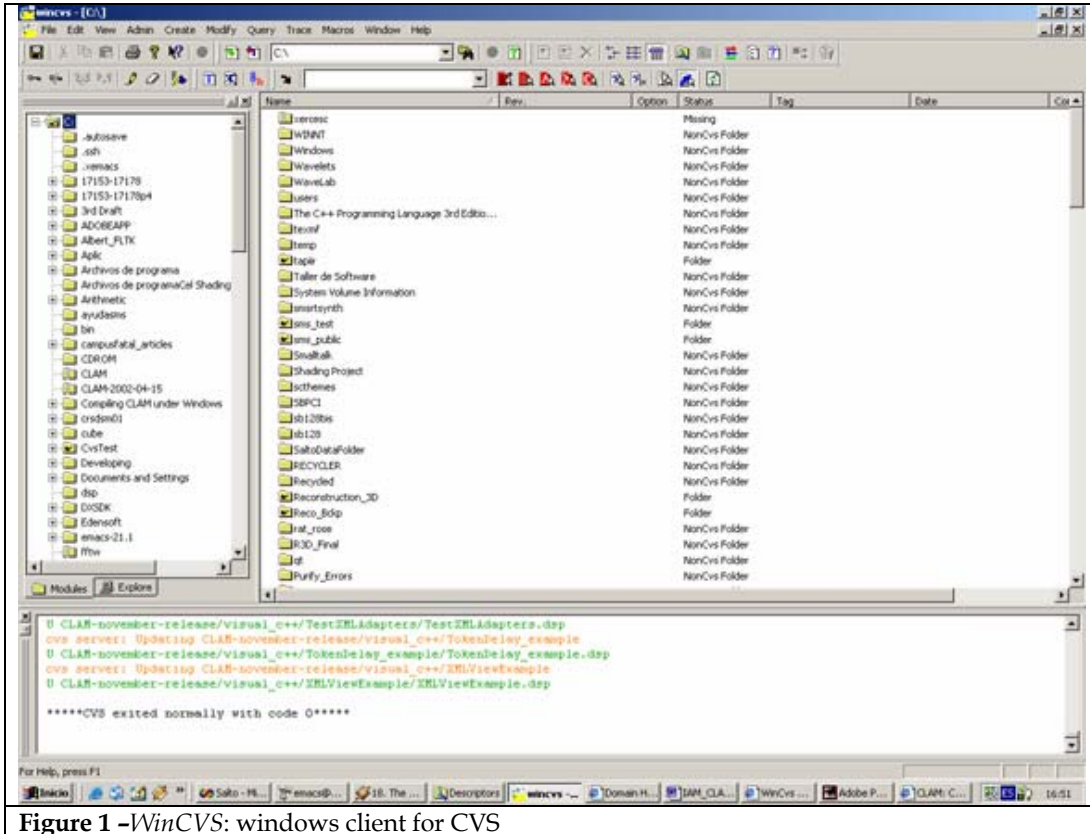


Figure 1 –WinCVS: windows client for CVS

First we access the *Admin – Preferences* option and we set CVSROOT: [anonymous@mtg150.upf.es:/cvsroot](mailto:anonymous@mtg150.upf.es). We activate the option *Password on the server*.

We then access the *Command Line* option in the *Admin* menu and we see the following dialog:

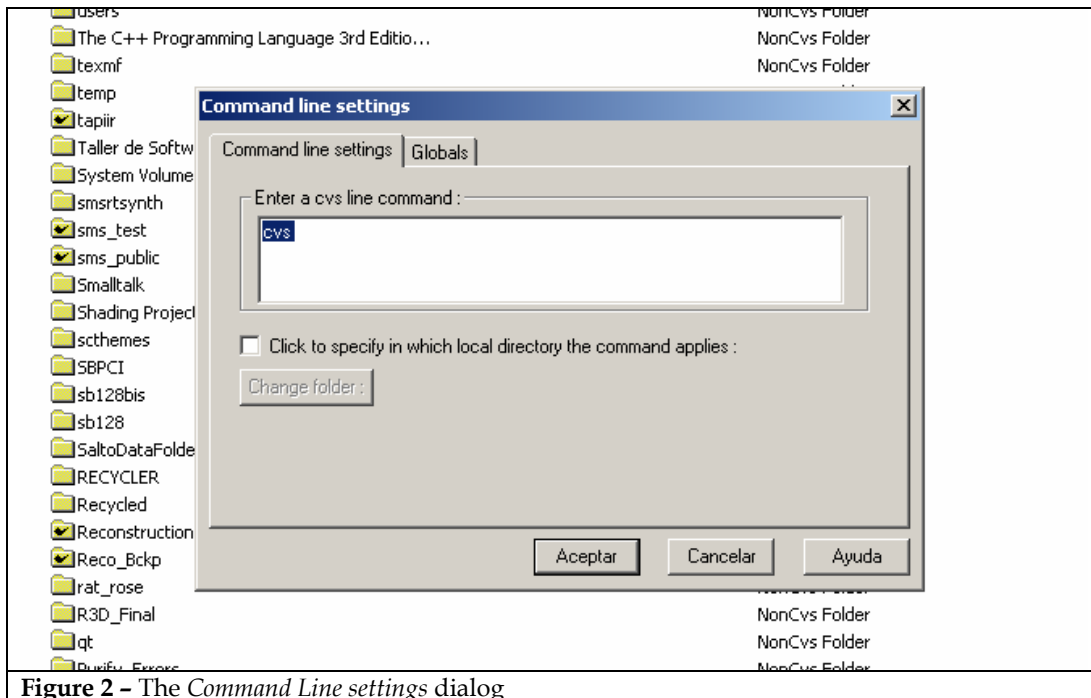


Figure 2 – The *Command Line settings* dialog

Click the “Click to specify in which local...” checkbox and the “Change Folder” button will be activated. Click on it and select the folder that you have created (ex. c:/CLAM_Sandbox).

Then you will have to introduce a set of commands in the CVS text area “Enter a cvs line command”. These are the commands you will need:

```

cvs login
cvs co -d CLAM CLAM
cvs co -d dxsdk dxsdk-8.1-VC
cvs co -d fftw fftw-2.1.3-VC-float
cvs co -d fltk fltk-1.0.11-VC
cvs co -d pthreads pthreads-20020302-VC
cvs co -d portmidi portmidi
cvs co -d xercesc xercesc-1.7.0-VC

```

You have to introduce these commands one by one. Once you enter the first one, a dialog will appear asking for a password. You just have to push “OK”.

Notes:

1. This does not intend to be a Win-CVS tutorial. If you need one go to <http://www.wincvs.org>.
2. WinCVS is not the only existing CVS client for Windows. It is just the one we use. The commands, though, can be used in any CVS client.
3. There are ways of doing the same that is in the command line commands using Win-CVS interface but we thought it would be clearer and easier to do it this way.
4. -z9 is the CVS option for maximum compression and minimum download time. We recommend it unless you have a very good connection and your time is not too precious.